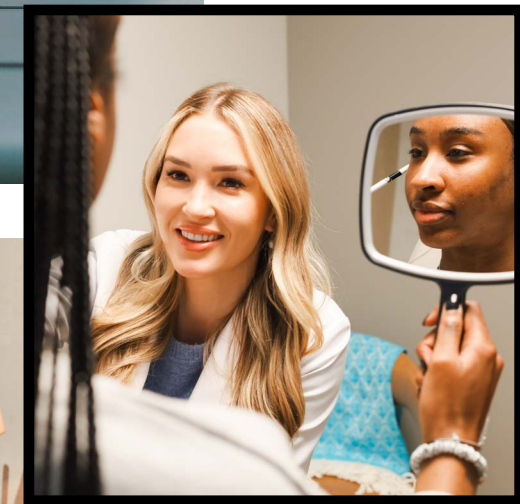
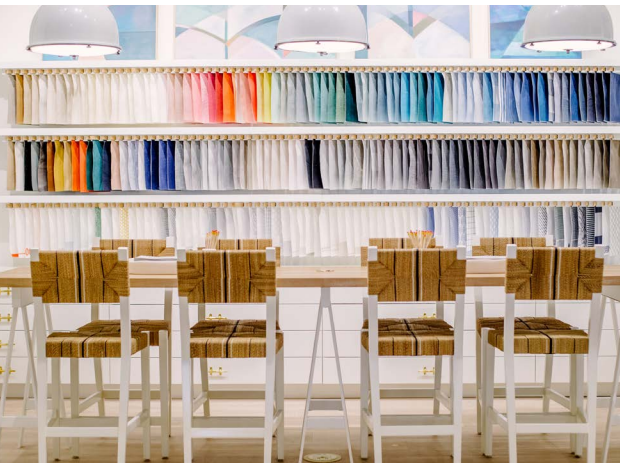




**WESTSIDE  
PROVISIONS  
DISTRICT**  
EST. 2008

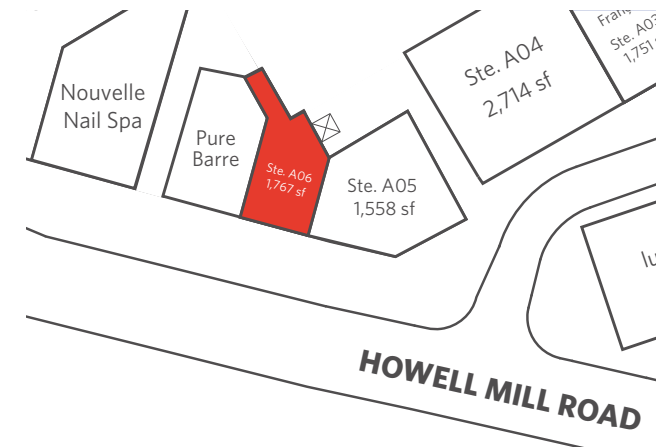
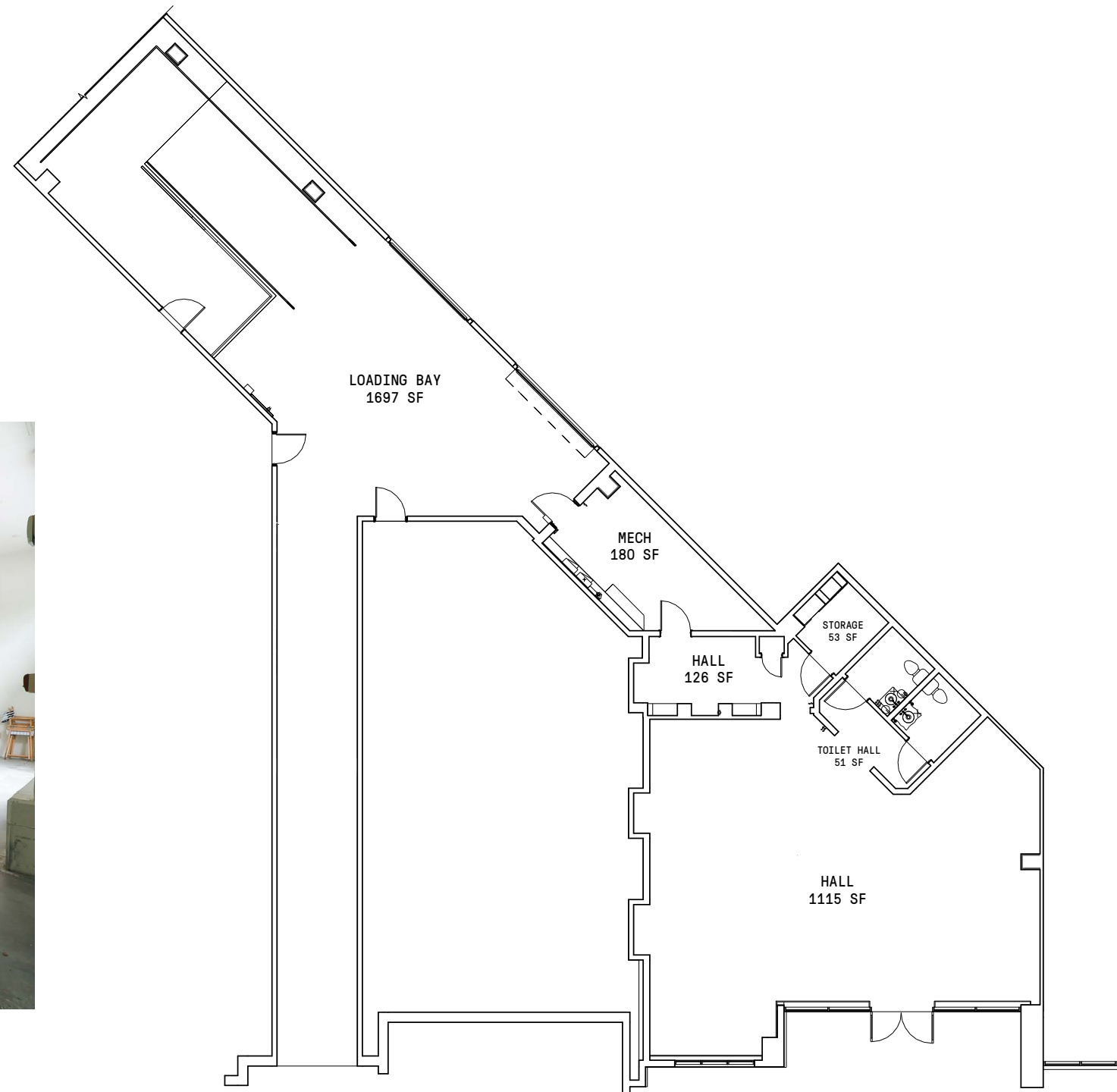


# SUITE A06

1,607 SF



- Directly faces Howell Mill Road
- Parking deck parking
- Located in building with Pure Barre and E + Rose Wellness

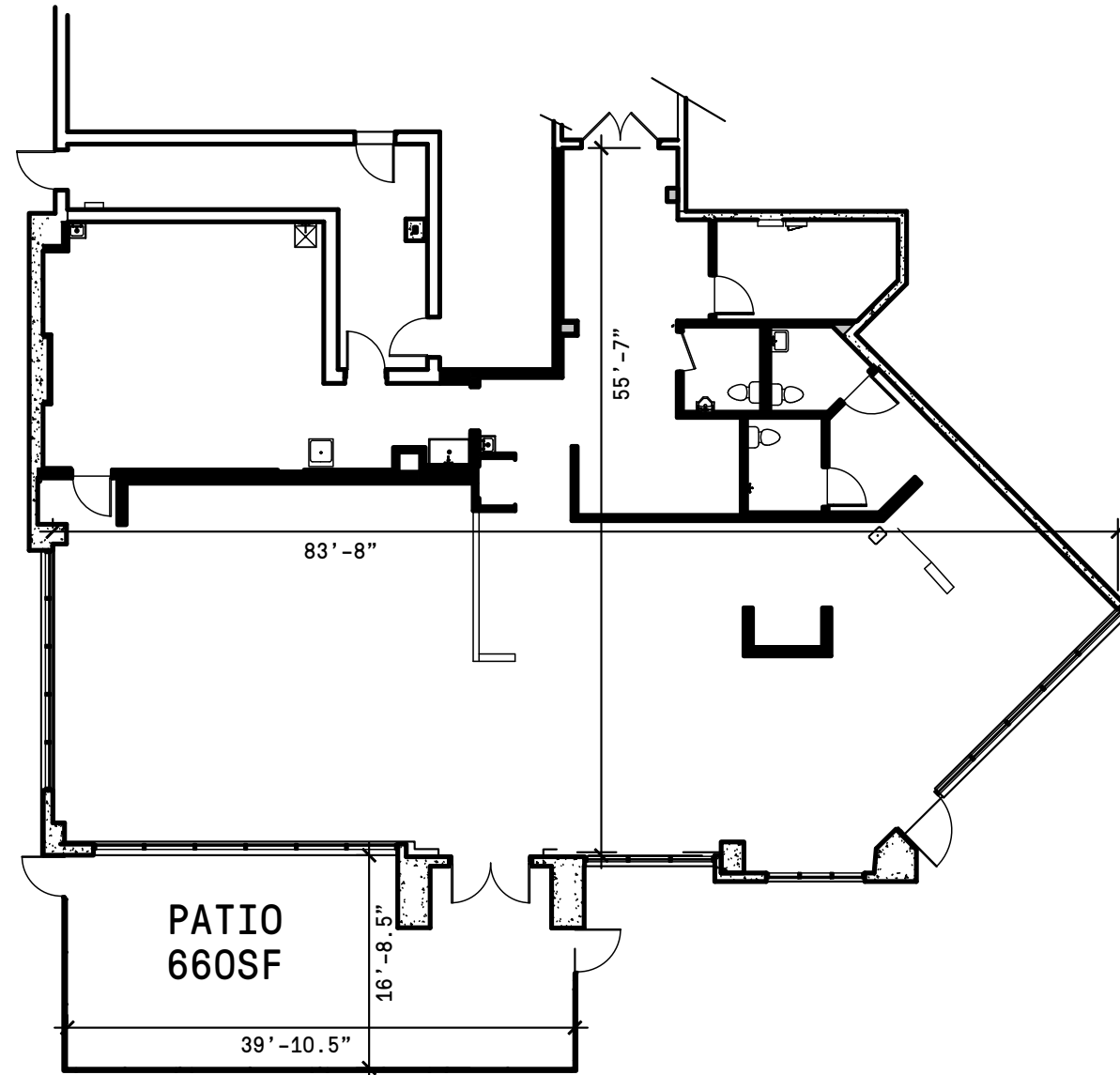
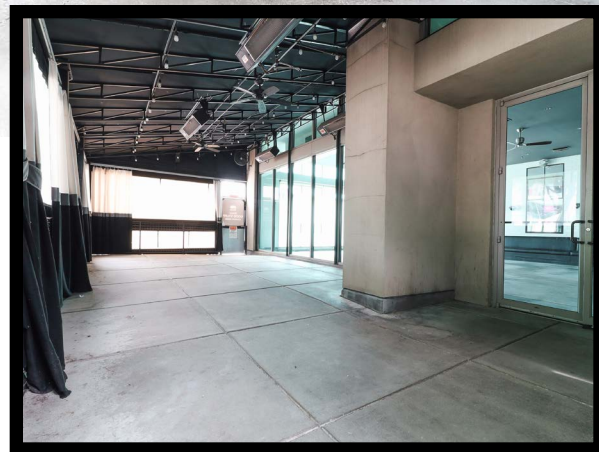


FOR MORE INFORMATION CONTACT:  
WESTSIDE PROVISIONS DISTRICT LEASING  
WSPDLEASING@JAMESTOWNLP.COM

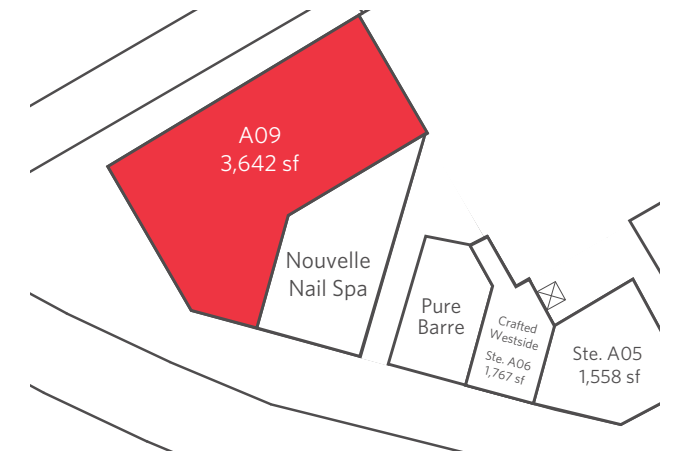


# SUITE A09

3,642 SF



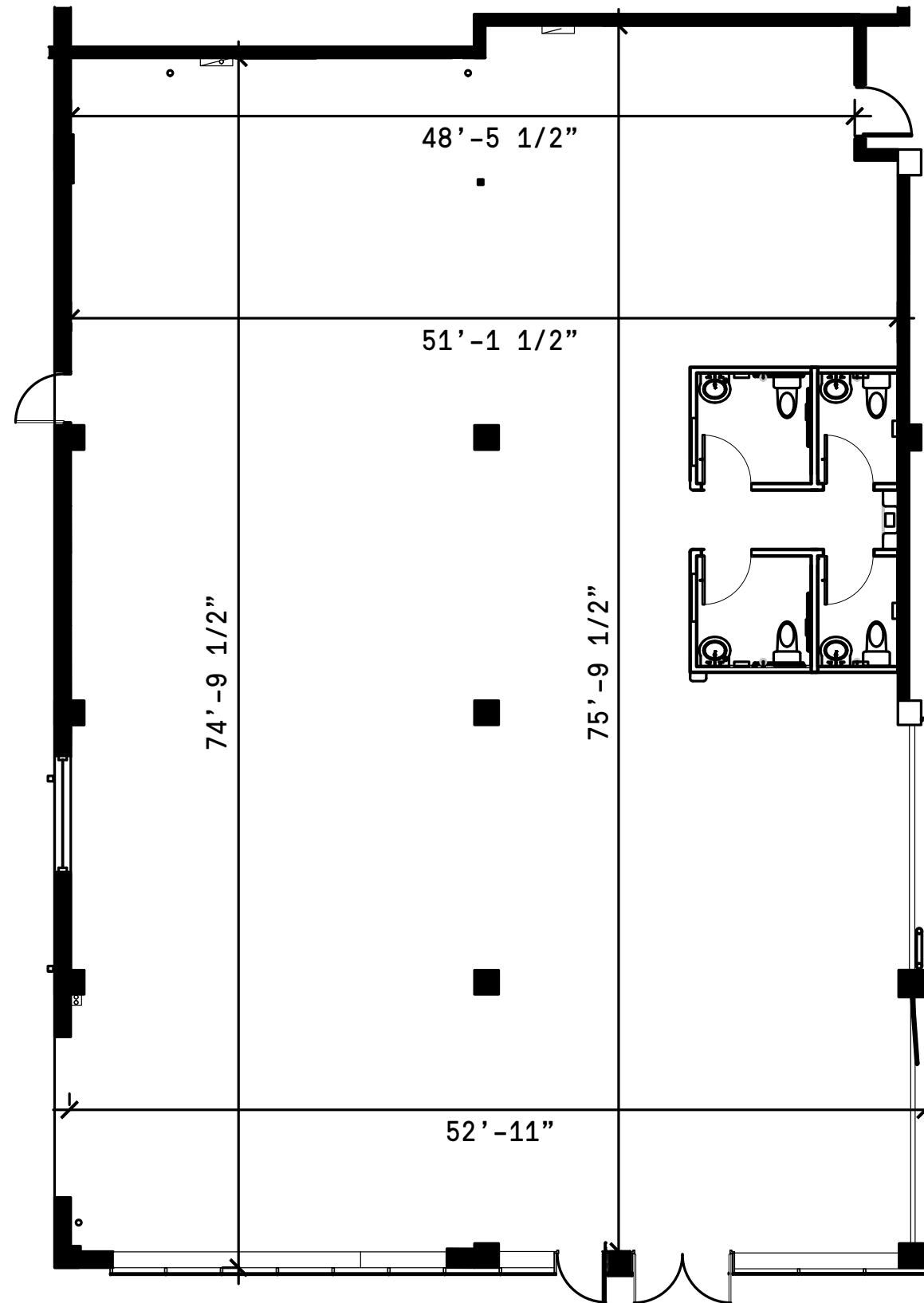
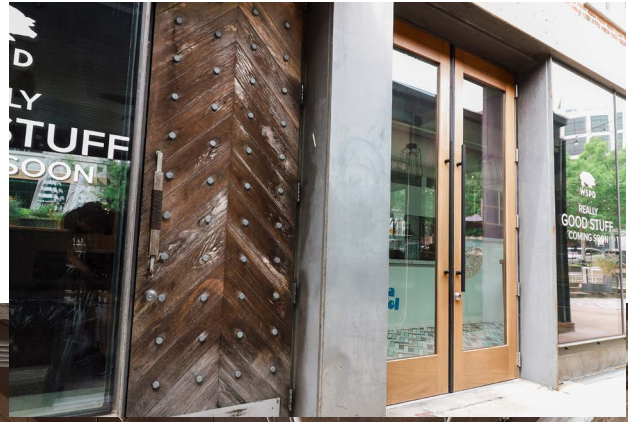
- Patio space
- Westside 'Pocket Park' to the left of entrance
- Directly faces Howell Mill Road
- Restaurant infrastructure



FOR MORE INFORMATION CONTACT:  
WESTSIDE PROVISIONS DISTRICT LEASING  
WSPDLEASING@JAMESTOWNLP.COM

# SUITE P10B

4,078 SF



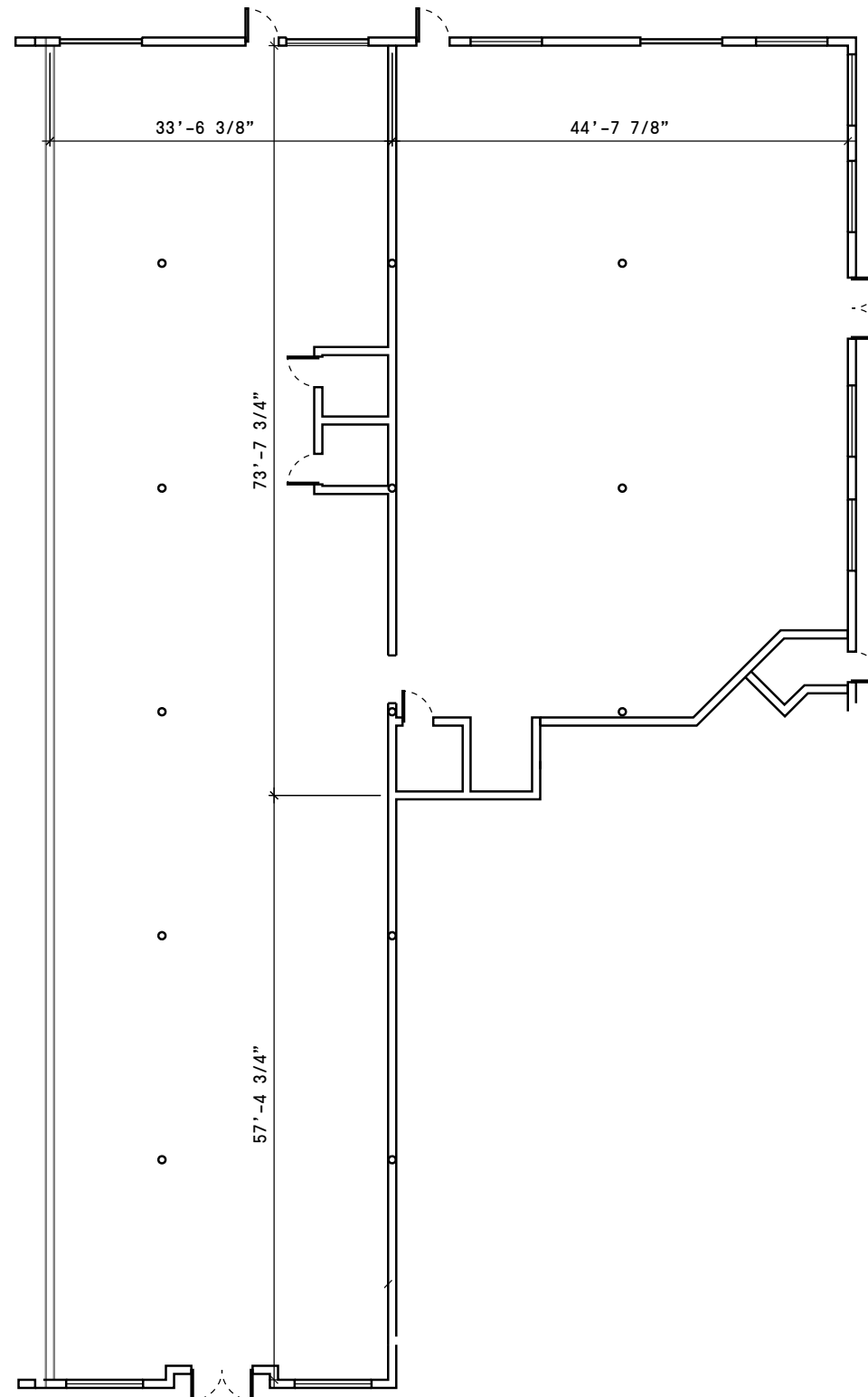
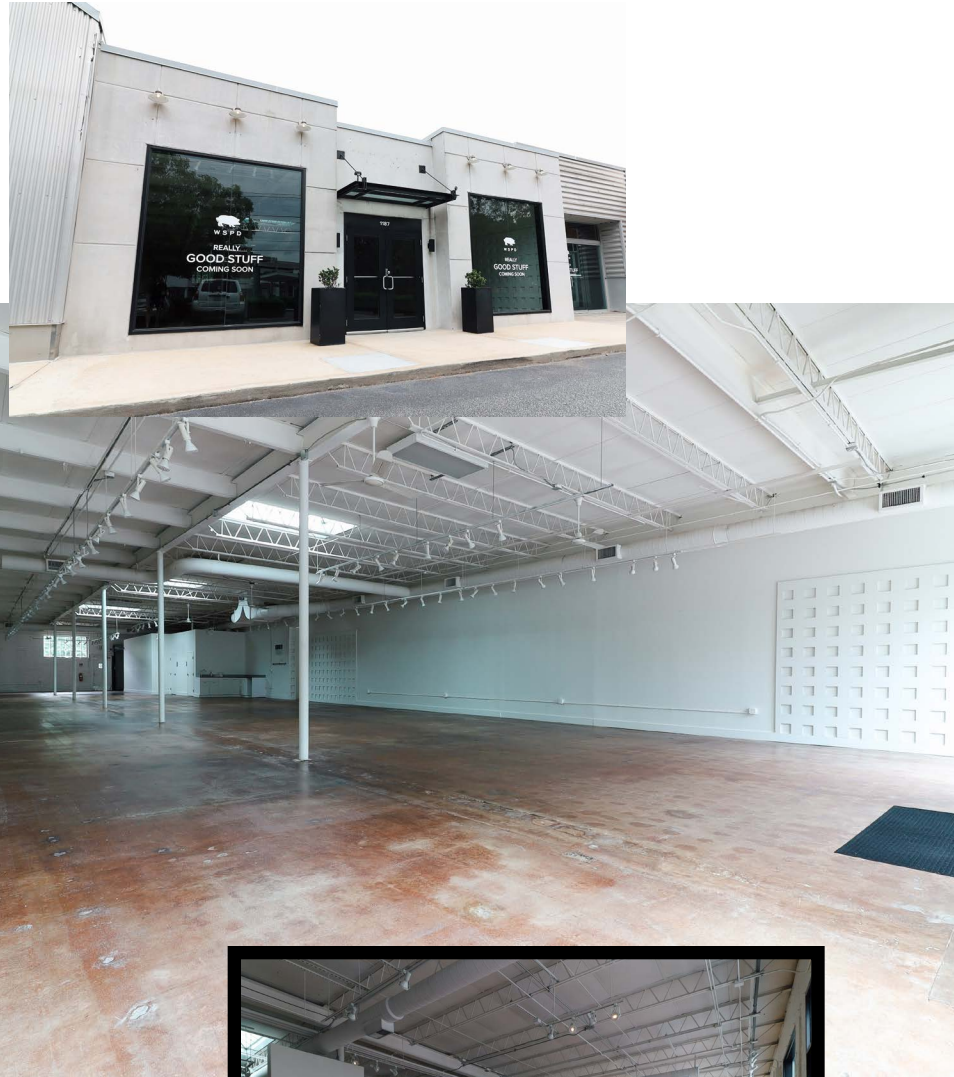
- Covered patio space
- Parking garage access
- Walkable in-line retail including Free People and East Fork Pottery
- Restaurant infrastructure



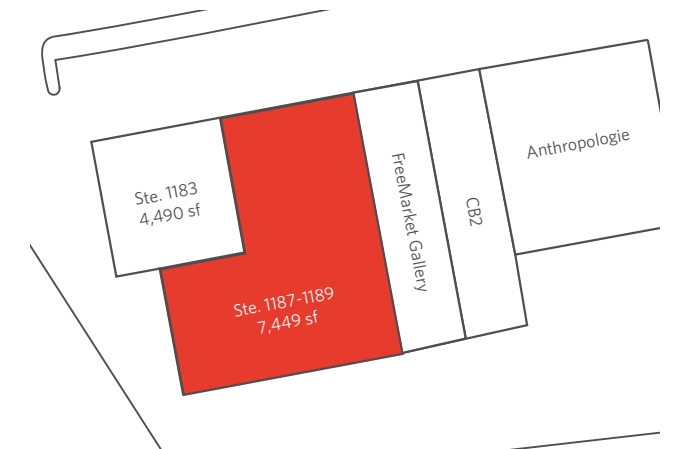
FOR MORE INFORMATION CONTACT:  
WESTSIDE PROVISIONS DISTRICT LEASING  
WSPDLEASING@JAMESTOWNLP.COM

# SUITE 1187-1189

7,449 SF



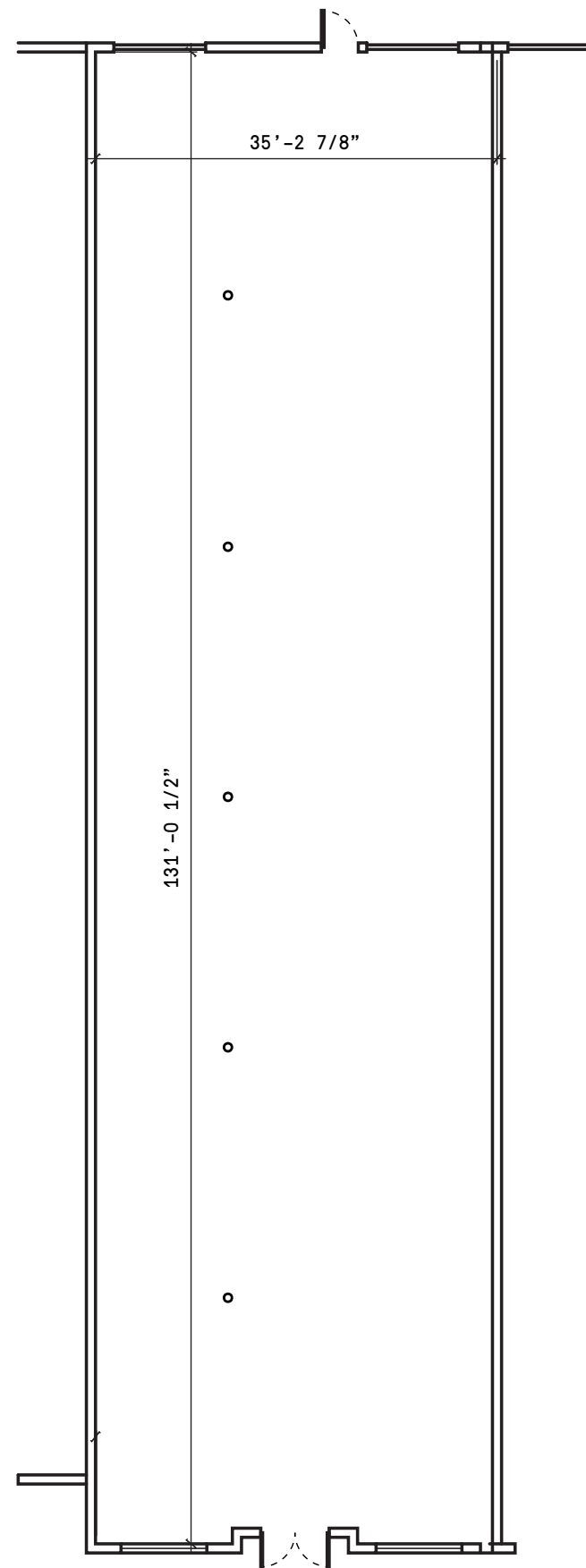
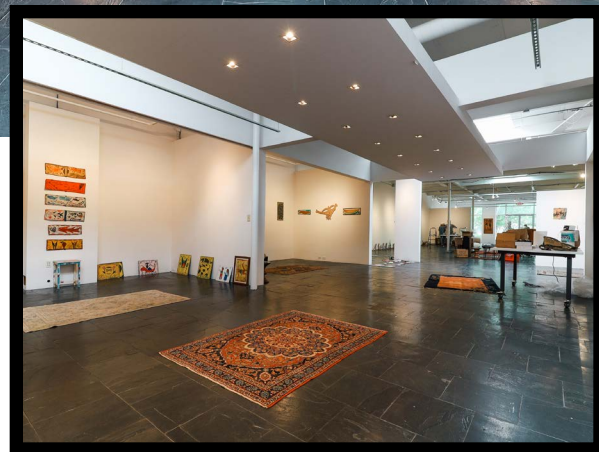
- Directly faces Howell Mill Road
- Parking in front of and behind the space
- Located in building with Anthropologie



FOR MORE INFORMATION CONTACT:  
WESTSIDE PROVISIONS DISTRICT LEASING  
WSPDLEASING@JAMESTOWNLP.COM

# SUITE 1193

4,650 SF



- Directly faces Howell Mill Road
- Parking in front of and behind the space
- Located in building with Anthropologie



FOR MORE INFORMATION CONTACT:  
WESTSIDE PROVISIONS DISTRICT LEASING  
WSPDLEASING@JAMESTOWNLP.COM



WESTSIDE PROVISIONS DISTRICT LEASING | WSPDLEASING@JAMESTOWNLP.COM

WWW.WESTSIDEPROVISIONS.COM

